

## Specifications

**Foundation :** R.C.C. Foundation as per design of Structure Consultants.

**Structure :** R.C.C. Frame Structure

**Wall :** Wall shall be constructed with first class Red Brick/Fly ash brick.

**Plaster :** In Cement mortar 1:6.

**Flooring :** Vitrified Tiles Flooring in all living area of the flats.

**Parking Area Flooring :** Crazy flooring in parking lots.

**External Wall Finish :** All external wall shall be finished with putty over two coat of weather shield paint.

**Internal Wall Finish :** All internal walls shall be finished with plaster of Paris punning on plastered surface and a coat of primer.

**Chowkhats :** Door frames (Chowkhats) of size 5"x21/2". P.V.C./M.S. or Equivalent.

**Doors :** 30mm thick ISI marks flush door shutters painted with coat of primer and putty.

**Windows :** Alluminium Window (Double Shutter).

**Kitchen :**

**Flooring :** Vatrified tiles

**Working Platform :** Green Slab

**Dada :** Premium quality printed 24"high glazed tiles.

**Sink :** Stainless Steel Sink

**Bathroom :**

**Flooring :** Floor tiles (Anti Skid).

**Wall :** Glazed tiles upto 7 feet level.

**Sanitary :** White Glazed vitreous Sanitary ware.

**Electrical :** All internal wiring in Concealed conduits with ISI mark copper cable. All Electrical modular switches and accessories of ISI Mark. Adequated lighting/sockets, outlets etc. provided in each room. Single phase connection to all the flats with a provision on separate meter with 1 KVA load for each units

**Water Supply :** Adequate water supply shall be provided.

**Lift :** Semi-automatic 13 passengers.

**Power Back up :** Providing emergency power with silent DG

## Location Map



# Divya Construction

It's Your Destination



# Divya Nilay

### SITE OFFICE

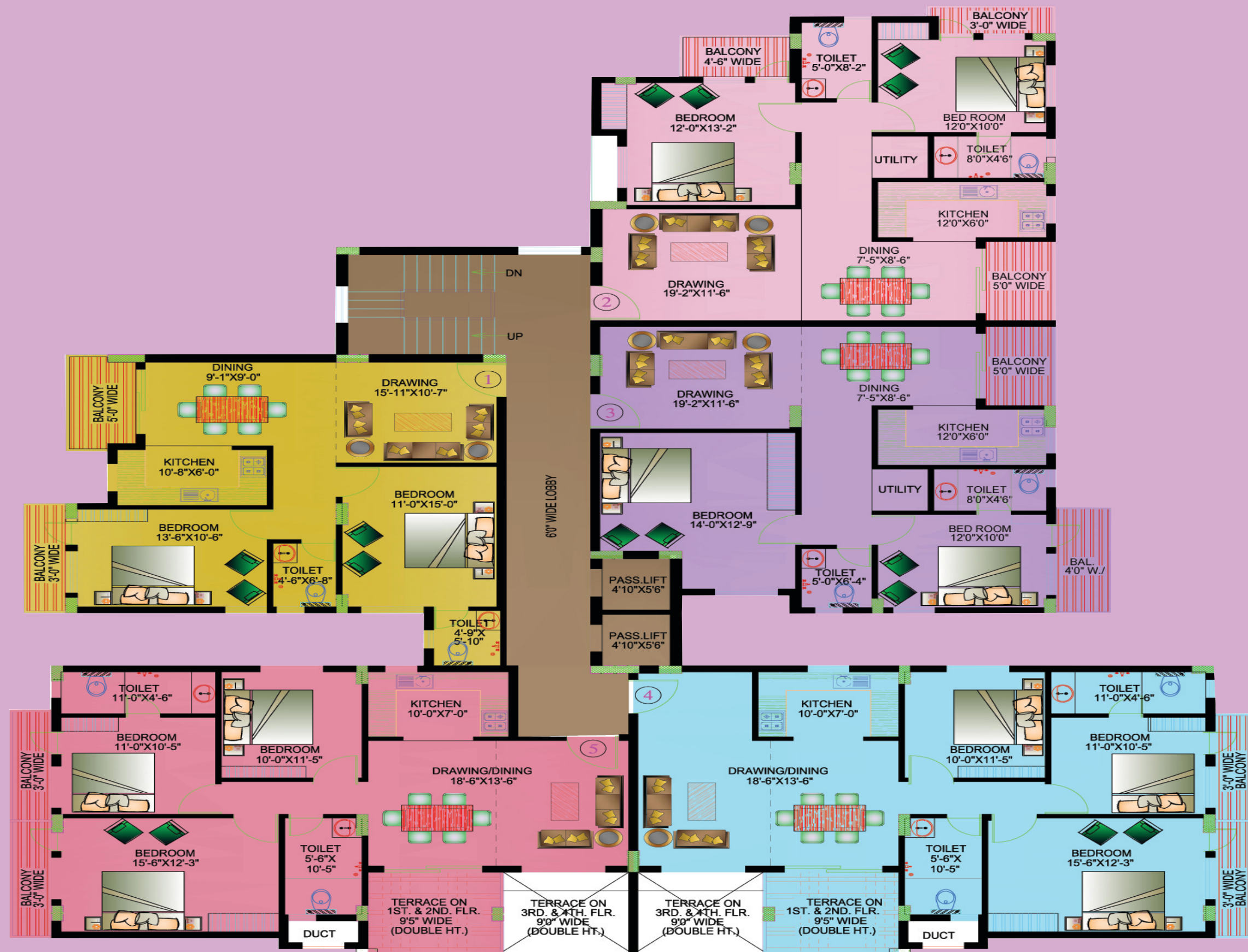
Near Lalalajpat Rai School, Argora, Chaputoli, Pundag, Ranchi - 834004, Jharkhand

### CORPORATE OFFICE

Ashok Nagar, Road No.-5, Opposite IGNOU Office, Ranchi - 834002, JHARKHAND

E-mail : divyaconstruction2011@gmail.com, Ph.: 7762036106, 7762036105

# FLOOR PLAN BLOCK - A



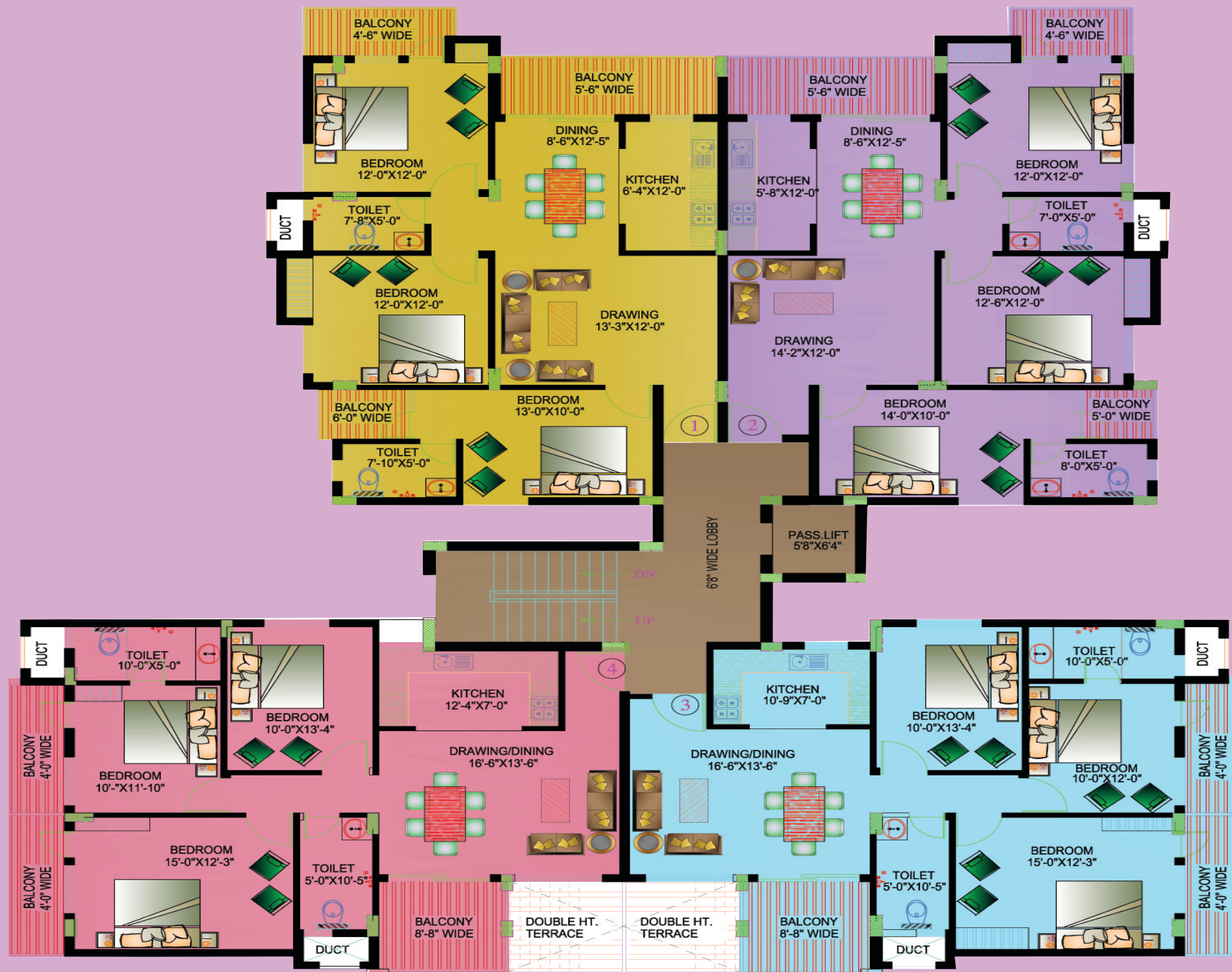
FLAT	1	2	3	4	5
BHK	2BHK	2BHK	2BHK	3BHK	3BHK
AREA	1169.32 sq.ft	1309.02 sq.ft	1281.33 sq.ft	1582.07 sq.ft	1476.9 sq.ft

# FLOOR PLAN BLOCK - B



FLAT	1	2	3	4
BHK	2BHK	2BHK	2BHK	2BHK
AREA	1214.48sq.ft	1236.32sq.ft	1230.28sq.ft	1144.8sq.ft

# FLOOR PLAN BLOCK - C



FLAT	1	2	3	4
BHK	3BHK	3BHK	3BHK	3BHK
AREA	1525.77Sq.ft	1527.36Sq.ft	1491.88Sq.ft	1517.68Sq.ft